

PART OF N.W. 1/4 OF SECTION 8, T.6N.,R.1W., S.L.B.&M.

TAXING UNIT: 20

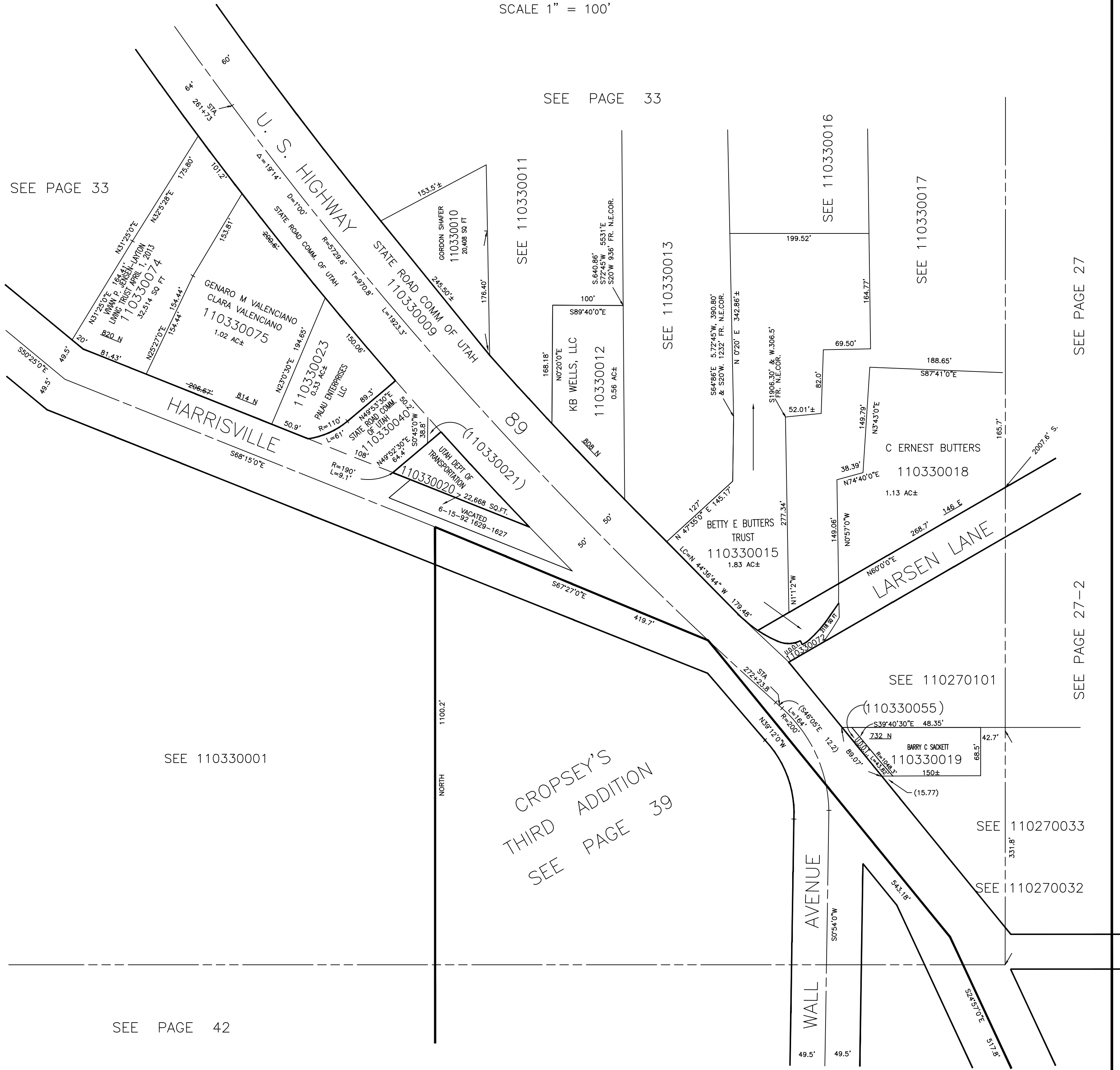
IN HARRISVILLE CITY

SCALE 1" = 100'

ALSO SEE PAGE 33-2

SEE PAGE 33

SEE PAGE 33



SEE 110330001

CROPSEY'S THIRD ADDITION SEE PAGE 39

SEE PAGE 42